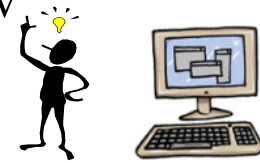


HTML REFERENCE CHART



REQUIRED TAGS:

```
<HTML>
<HEAD>
<TITLE>
</TITLE>
</HEAD>
<BODY>
</BODY>
</HTML>
```

<i>OPEN TAG</i>	<i>CLOSING TAG</i>	<i>DESCRIPTION</i>
<HTML>	</HTML>	Defines the area within as an HTML page
<HEAD>	</HEAD>	Brings you into the title bar
<TITLE>	</TITLE>	Lets you type the title of your page
<BODY>	</BODY>	Non-head document contents
<H1>-<H6>	</H1>-</H6>	Different heading levels
		Bold
<I>	</I>	Italic
<U>	</U>	Underline
[]	Superscript
_		Subscript
<TT>	</TT>	Teletype, monospace font
 		Break tag, inserts a return (CLEAR = all, when forcing text below an image)
<P>		Paragraph tag, inserts white space before and after the line containing the tag
<PRE>	</PRE>	Preformatted Tag, shows text exactly as typed
<BLOCKQUOTE>	</BLOCKQUOTE>	Indents blocks of text, indents both left and right margins
<!--	-->	Comment tag, lets you put text in an HTML document that you don't want people to see
		Unordered list
		Ordered List

Mrs. Horwitz's Classes - Final Exam Review

		Denotes an item in a list
		Changes different attributes of the font, (SIZE, COLOR, and FACE)
<HR>		Makes a horizontal line (WIDTH, SIZE, ALIGN, and NO SHADE)
©		Copyright symbol
®		Registered symbol
&		Ampersand
°		Degree symbol
"		Quotation mark
Ø		Zero sum symbol
§		Legal section symbol
‰		Percentage symbol
¥		Japanese yen symbol
¶		Paragraph symbol
		Lets you put in an image (SRC [filename], ALIGN, ALT [alternative text], HSPACE, and VSPACE)
BACKGROUND		Attribute to BODY tag, followed by a filename, puts in an image for a background
BGCOLOR		Attribute to BODY tag, followed by # and an RGB code, inserts a color for background
TEXT		Attribute to BODY tag, follows same rule as BGCOLOR, makes the text a different color
		Anchor tag, used for hyperlinks, HREF is a required attribute (except when using name); when followed by website or filename, will bring you to that file; when followed by mailto: it will bring up an e-mail editor; when followed by # it is a referring tag
NAME		Attribute to Anchor tag, used instead of HREF for a destination tag (internal link)
ALIGN		Attribute to <P> tag, values are left/center/right/justify, used for paragraph alignment
TARGET		Attribute to Anchor tag, used to open a page in a new window when value =_blank
<META>		Used to define keywords for your webpage when searched, can also open another page after a certain time, required attributes are NAME or HTTP-EQUIV and CONTENT
START		Attribute to the tag, set it equal to the number you want to start at (START=5)
<TABLE>	</TABLE>	Creates a table, attributes include BORDER, BORDERCOLOR, CELLPADDING, CELLSPACING, WIDTH, (ALIGN and BGCOLOR are for <TD> and <TR>)
<TR>	</TR>	Stands for table row, inserts a row into a table
<TD>	</TD>	Stands for table data, inserts a cell into a row of a table, other attributes are ROWSPAN and COLSPAN which makes a cell span a number of rows or columns respectively
<BG Soundsrc=>		Background sound